

# GLOBAL SCREEN BERLINALE SERIES DAYS 2021







## FAST KARKURIT

Series | 10 x 42' | Crime, Action | Yellow Film & TV |  
FIN (OV), ENG ST

ONE FUGITIVE, A TEAM OF  
5 CRIMINAL INVESTIGATORS, 48 HOURS  
BEFORE THE TRAIL GETS COLD. THE CHASE IS ON!

FAST tells the case-by-case story of the Fugitive Active Search Team within the Finnish National Bureau of Investigation. The elite team's mission is to improve domestic safety by tracking down and arresting dangerous or skilful fugitives. For each case, the team has 48 hours to locate the target before their trace turns cold. The unit's leader is Karita,

a former homicide squad boss, whose efficiency is based on her ability to see the fugitives as individuals, not just as faceless criminals who are born evil.

*This spectacular crime series brings together Finland's greatest talents, such as Pirjo Lonka*

*(“Deadwind”), Pelle Heikkilä (“Invisible Heroes”), Anna Böhm (“Bastard”), Mikko Leppilampi (“Bordertown”) and Kristo Salminen (“Arctic Circle”). The mismatched team convinces in the thrilling action scenes as well as in the smart tactical operations.*



## TURBULENT SKIES VLIEGENDE HOLLANDERS

Series | 8 x 50' | Drama | Topkapi Series, Avrotros/NPO1 |  
DUTCH (OV), ENG ST

TWO PIONEERS, ONE DREAM.  
ALTHOUGH THEY OBVIOUSLY SHARED A PASSION FOR FLYING,  
THEY COULD NOT HAVE BEEN MORE DIFFERENT.

As the founders of Dutch aviation, idealist Albert Plesman and opportunist Anthony Fokker, are inextricably bound together. They cannot live with each other or without. Nevertheless, during the Interwar Period when the world is heading towards a new war, they join forces to set up civil aviation.

*This adventure drama series aims to join the ranks of state-of-the-art-drama, so popular with audiences today. It depicts a historical setting with dynamic camera work, cutting-edge visual effects and high-end art direction. The epic story portrays the feud fought between*

*Albert Plesman (director of KLM) and Anthony Fokker (famous pilot and aircraft manufacturer) during 1919 and 1930.*





## DARK WOODS

### DAS GEHEIMNIS DES TOTENWALDES

Mini-Series | 6 x 45' | Thriller, Drama |

Bavaria Fiction for ARD Degeto | GER (OV), F DUB, ES DUB, ENG ST

The investigation into the disappearance of Barbara Neder by the police authority in charge is less than exemplary. Her brother, high-ranking Hamburg police officer Thomas Bethge decides to take on the case himself - unaware that the search for Barbara will take more than 30 years and will reveal a series of horrific murders.

A MISSING WOMAN,  
A FAMILY TORN APART,  
A 30-YEAR QUEST FOR THE TRUTH

*Inspired by real-life-events that took place in the late 1980s, this sinister mini-series tells the story about a family, and of a brother searching for his missing sister for more than three decades. From award-winning writer Stefan Kolditz ("Generation War", "Naked among Wolves") with Matthias Brandt ("Babylon Berlin"), Karoline*

*Schuch ("Luther and I"), August Wittgenstein ("Das Boot"), Nicholas Ofczarek ("Pagan Peak") and Hanno Koffler ("Never look away"), as main characters.*

*Average market share of 20.2 %; 10.7 million streams in the ARD Mediathek in 2020*



## A GOOD YEAR

### EEN GOED JAAR

Series | 8 x 45' | Crime, Drama | Mockingbird

Productions/Medialaan VTM, RTL Videoland | DUTCH (OV), ENG ST

As Erik is unable to pay the inheritance tax for the country house of his deceased great-aunt, he solicits the help of small time criminal Lenny to break into the house and steal everything of value. By accident, they discover a hidden cellar in which Erik's great-uncle, a resistance leader, kept his supplies and some bottles of a 1937 Château Rycler. Local legend



A DISGRACED ENGINEER AND A DOWN-ON-HIS-LUCK SMALL-TIME CROOK  
HOPE TO STRIKE IT RICH BY CLAIMING TO HAVE FOUND HITLER'S WINE  
CELLAR. THEIR CON SOON SPIRALS OUT OF CONTROL ...

has it that in 1940, Hitler had his HQ, known as Hitler's Shelter, in nearby Brûly-de-Pesche to oversee the invasion of France. While downing one of the bottles the well-oiled men cook up an idea: Hitler's Shelter + the stuff in the cellar = a way to make money. Their new business idea soon comes to life with the help of canny art historian Judith

and erratic Rosy, the well networked daughter of Antwerp crime lord Michel.

*A twisty crime-drama with a gripping storyline, produced by experienced production companies, who have come together to create high-quality series for the international market.*





## FERDINAND VON SCHIRACH: ENEMIES

### FERDINAND VON SCHIRACH: FEINDE

Event Movies | 2 x 90' | Crime, Drama | MOOVIE GmbH  
for ARD Degeto, Constantin Film | GER (OV), ENG ST

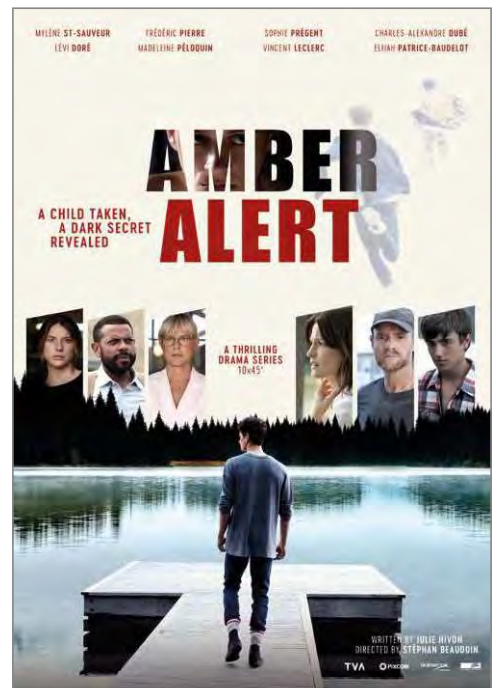
The kidnapping of a 12-year-old girl is told in two parallel films. One film follows inspector Peter Nadler, who in a race against time uses dangerous methods to save the girl. The other follows the accused's defense attorney, Konrad Biegler, who wants to protect his client at all costs. In the end, Nadler and Biegler face each other in court and fight

for their ideas of justice. But what is right and what is just? Does the end justify all means? Is the rule of law and its representatives allowed to do everything when it comes to saving human lives or must the law apply always and for all? We all want to do the right thing, but are we allowed to break the law for that?

ONE STORY, TWO PERSPECTIVES, TWO FILMS:  
A POLICE OFFICER AND A DEFENSE ATTORNEY STRUGGLING  
FOR WHAT IS RIGHT AND WHAT IS JUST.

*Starring Oscar-nominee Klaus Maria Brandauer ("Out of Africa", "James Bond - Never say never again") and Bjarne Mädel ("How to Sell Drugs On-line (Fast)", "Crime Scene Cleaner").*

*More than 15 million viewers and up to 21.8% market share on ARD.*



## AMBER ALERT

### ALERTE AMBER

Series | 10 x 45' | Drama | Pixcom/TVA | FR (OV), ENG ST

THE KIDNAPPING OF AUTISTIC ÉLIOT TURNS HIS  
FAMILY'S LIVES UPSIDE DOWN, REVEALING THAT THIS  
FAMILY WAS NEVER QUITE WHAT IT SEEMED.

The worst nightmare of a parent becomes a brutal reality for Valérie and Jonathan: the disappearance of their 12-year-old son Éliot, who is autistic. The Missing Persons Unit instantly sets off an Amber Alert. Every minute counts to bring Éliot back home safe and sound. Members of the Missing Persons Unit question the family, revealing intimate

details about their past and the circumstances that triggered the tragedy.

*A twist-filled crime drama portraying both a family's misfortune and the emotional ties that bind them. The poignant storyline brings together the experiences of tough days with mo-*

*ments of brightness and hope. The skillful way in which the story of the police investigation, the history of the patchwork family, and the events around the kidnapping itself are interwoven makes this high-quality series as gripping as a family drama and exciting as a thriller.*





## BURIED TRUTH WILDER

Series | 18 x 60' | Crime | PanImage, C-Films/SRF |  
SWISS GER (OV), GER DUB, IT DUB, FR DUB, ENG ST

When Rosa Wilder takes on her latest case, she has no idea that it will lead her and her partner Manfred Kägi to the edge of their darkest inner abysses. A serial killer seems to be targeting black sheep within the police force, whose missteps he punishes with death. Rosa fights on all fronts; even her small family threatens to fall apart in the roar of events.



## STREETS OF BERLIN

Series | 12 x 90' | Crime | rbb, Das Erste |  
GER (OV), ENG ST

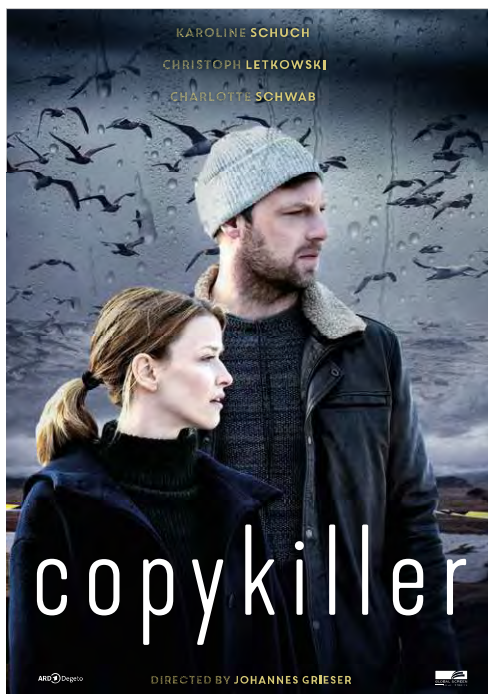
Berlin is sexy, deadly and dangerous. The German capital is not only a party mecca, it's tops in crime and murder, as well. Inspectors Nina Rubin and Robert Karow are big-city homicide cops and an uneven duo. Their murder cases lead them behind the scenes of glamorous Berlin.



## MODERN MURDER

Series | 10 x 90' | Crime | W&B TV for MDR/Das Erste | GER (OV), FR DUB, ENG ST

A pair of female detectives with their fingers on the pulse of crime, who are as different and unpredictable as the cases they solve. The tension between the two women, which stems from their different backgrounds and investigative styles, drives the cases forward and pushes them to their limits – privately and professionally.



## COPYKILLER DIE TOTEN AM MEER

TV Movie | 89' | Crime | MOOVIE for ARD Degeto/  
Das Erste | GER (OV), ENG ST

Does an imprisoned serial killer instruct brutal murders on the Husum coast? This is the question facing young inspector Ria Larsen: the bodies in the dunes point to a copy killer. During the investigation, Ria gets into a race against time and into a dangerous game with a ritual killer who has already destroyed the life of her predecessor.



## MOUNTAIN MURDERS WATZMANN ERMITTELT

Series | 28 x 48' | Crime | Luckybird Pictures/ARD for  
Das Erste, BR | GER (OV), ENG ST

The entertaining criminal cases of a mismatched pair of detectives in a picturesque idyll: when charismatic Jerry Paulsen from the State Criminal Police Office in Hamburg is deployed to a small town in the Alps, conflict with the resident Chief Inspector Benedikt Beissl is all but guaranteed. Professionally and privately, as Jerry is also dating Beissl's daughter.

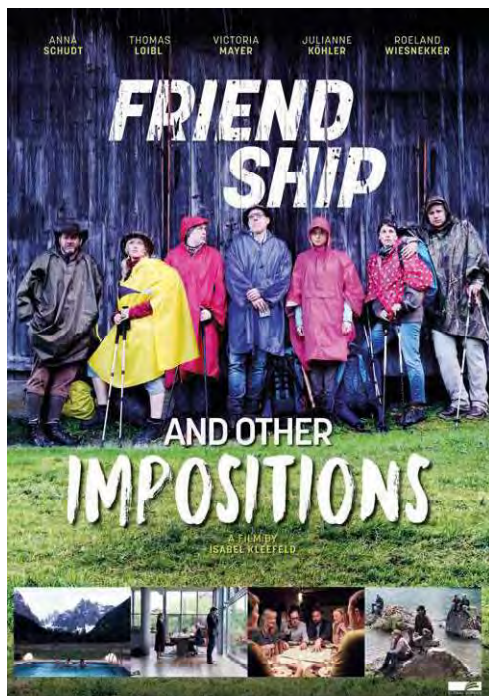


## COASTAL PILOTS KÜSTENPILOTEN

TV Movies | 2x90' | Romance | NFP\* | GER (OV),  
ENG ST

Single-mother Swantje is facing challenges on all fronts – the family business is in trouble due to her father's forced retirement and then her prodigal brother, apple of her father's eye, returns to 'lend a hand' and push her aside. It's just as well she's no pushover.





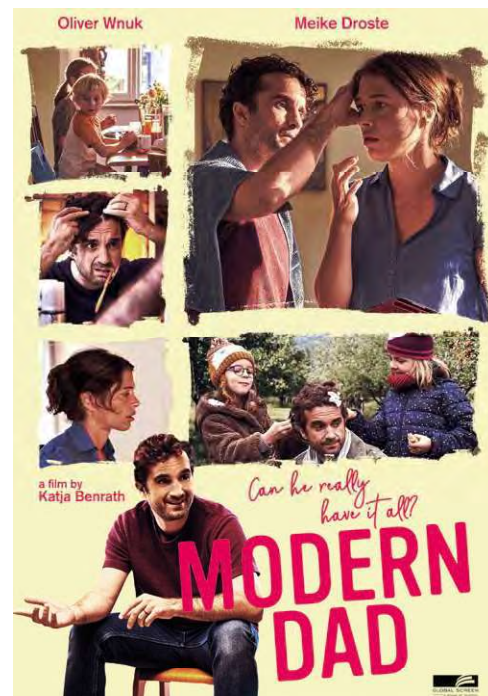
**FRIENDSHIP AND OTHER IMPOSITIONS**  
EINE HARTE TOUR  
TV Movie | 98' | Roxy Films for WDR | GER (OV),  
ENG (ST)

Since their divorce, Clemens and Corinna's circle of friends has tried to maintain their long-standing friendships with both alike. When Clemens suddenly dies, the friends decide to go on a hike to hang up a photo of him in the summit chapel in memorium. Not only the friendships among each other, but also their marriages are put to a hard test on this tour de force...



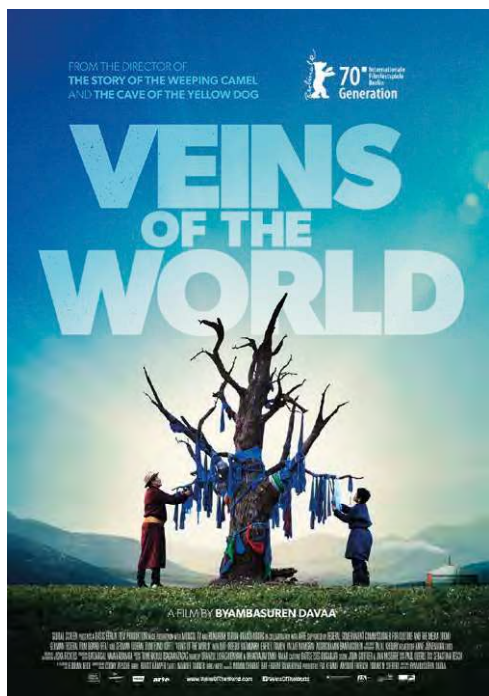
**SWEET AS PIE**  
HOCHZEITSSTRUDEL & ZWETSCHGENGLÜCK  
TV Movie | 90' | RomCom | maze pictures for ARD  
Degeto | GER (OV), ENG ST

When Hanna unexpectedly inherits half a farm, the city girl must move to the countryside. The timing couldn't be worse for Hanna who is just about to invest in a coffee bar in the city. However, the longer she spends in her old home, the clearer she comes to see her own dreams.



**MODERN DAD**  
DAS LEBEN IST KEIN KINDERGARTEN  
TV Movie | 90' | Comedy | Amusement Park Film  
for ARD Degeto | GER (OV), ENG ST

Freddy is a modern dad: while his wife Juliana works as a doctor, he looks after their children, while also working as the newly appointed head of a pre-school. Freddy has his own pedagogical theories and is excited to finally have the chance to implement them. But when Juliana is offered a new job, she wants to move the whole family to Switzerland...



**VEINS OF THE WORLD**  
DIE ADERN DER WELT  
Feature Film | 97' | Drama, Family | BASIS BERLIN  
Filmproduktion GmbH | MONGOLIAN (OV), ENG (ST)

Amra's father Erdene is the leader of the last nomads opposing global mining companies digging for gold in the Mongolian steppe. After his father dies in a tragic car accident, Amra sets out to continue the fight in his father's spirit – but with the tools of an 11-year-old boy.  
*Mongolian Oscar Entry 2021*



**CRESCENDO #makemusicnotwar**  
CRESCENDO  
Feature Film | 106' | Drama | CCC Filmkunst |  
GER/ENG (OV), ENG ST

When a world famous conductor tries to create an Israeli-Palestinian orchestra, it takes all his skill and resources to overcome the discord and get them to play in harmony, rising to a tense and emotional finale.  
*Academy-Award nominated director Dror Zahavi directs this gripping drama as a constantly growing 'crescendo'.*



**NEEDLE PARK BABY**  
PLATZSPITZBABY  
Feature Film | 100' | Drama | C-Films | Swiss GER  
(OV), FR (DUB, ST), IT (DUB), GER (ST), ENG (ST)

Spring 1995 - after the closure of the Needle Park and the public drug scene in Zurich, 11-year-old Mia and her heroin addicted mother Sandrine are relocated to the countryside. While caring for her mother, Mia spends time with her imaginary friend and a gang of local teenage misfits. These friendships finally give her the strength to rebel and break free from her abusive mother.





## RATE YOUR DATE

RATE YOUR DATE

Feature Film | 100' | RomCom | The Amazing Film Company, Seven Pictures Film GmbH | GER (OV), ENG ST

After a failed date, Teresa and Anton have a brilliant idea: a dating app in which users rate each other and are divided into categories. #RateYourDate is born and the times of bad dates are over. Together with womanizer Paul and romantic Patricia they start the app. But love does not follow any algorithm...

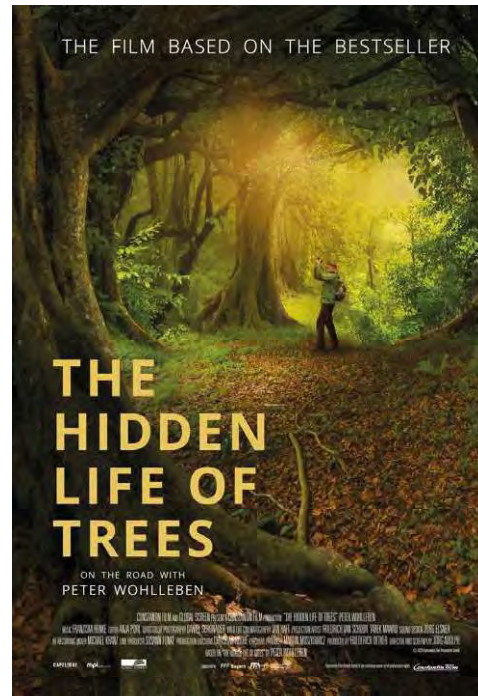


## FAKING BULLSHIT

FAKING BULLSHIT

Feature Film | 99' | Comedy | Movie Films, Gretchenfilm Filmproduktion GmbH | GER (OV), ENG ST

In a sleepy little town, four police officers have made their peace with the near total absence of crime on their patch. Their stress-free lives are rudely interrupted by the arrival of Tina who has come to review whether the station needs to close given the distinct lack of criminal activity. To save their jobs, the officers start faking some crimes themselves.



## THE HIDDEN LIFE OF TREES

DAS GEHEIME LEBEN DER BÄUME

Feature Film | 101' | Documentary | Constantin Film Produktion GmbH | GER (OV), ENG ST

Bestselling-author Peter Wohlleben tells us in an entertaining and enlightening way about the solidarity and cohesion of the trees. Wohlleben travels to Sweden to see the world's oldest tree; he visits businesses in Vancouver that are approaching new ways how to treat the woods. Because he knows that we humans can only survive if the woods are healthy.



## OOOPS 2! THE ADVENTURE CONTINUES

OOOPS! 2 – LAND IN SICHT

Feature Film | 81' | Animation | Ulysses Filmproduktion, Fabrique d'Images, Moetion Film | ENG (OV), GER (DUB, ST)

The young Nestrian Finny and his best mate Leah, a Grymp, accidentally fall off the ark and are swept out to sea. Out on their own on a raft, they get separated by a storm. While Finny finds a whole colony of Nestrians under water, Leah lands on a beautiful island. If only the newfound land wouldn't shake that regularly and smoke from the mountain top...



## SUNE – MISSION MIDSUMMER

SUNE – UPPDRAG MIDSOMMAR

Feature Film | 88' | Family Entertainment | Unlimited Stories | SV (OV), ENG ST

Sune and Sophie both want to celebrate Scandinavian Midsummer with their families. But the day before they leave, Sophie breaks up with Sune. It's a disaster! Trying to win his beloved Sophie back, Sune makes the mistake of listening to his little brother, who has watched thousands of romantic comedies from the 80s. It turns out to be a very bad idea...



## PETRONELLA APPLEWITCH

PETRONELLA APPELMUS

Series | 39 x 11' | Animation | Akkord Film, SERU Film Produktion, 2 Minutes/ZDF | GER (OV), ENG ST

Life is never boring when your best friend is an apple witch! Petronella loves her garden and all the creatures in it. She uses her magical powers to care for them, but her magic is... well, powerful but improvised. Luckily, there are the twins Leah and Louis who always find clever ways to help solve Petronella's hiccups and all the other challenges in the garden.



# OUR UPCOMING HIGHLIGHT



## THE WANNSEE CONFERENCE

HISTORICAL DRAMA  
FEATURE

## SALES TEAM

**Julia Weber**

Head of International Sales & Acquisitions  
North America

Phone +49 89 244 295 590  
[julia.weber@globalscreen.de](mailto:julia.weber@globalscreen.de)

**Helge Köhnen**

SVP, International TV Sales & Acquisitions  
Eastern Europe, Italy, Portugal,  
Spain, Middle East

Phone +49 89 2441295-587  
[helge.koehnen@globalscreen.de](mailto:helge.koehnen@globalscreen.de)

**Stefanie Hofferbert**

VP, International TV Sales & Acquisitions  
Benelux, Scandinavia, Greece,  
Latin America

Phone +49 89 2441295-583  
[stefanie.hofferbert@globalscreen.de](mailto:stefanie.hofferbert@globalscreen.de)

**Stephanie Wang**

VP, International TV Sales & Acquisitions  
French-speaking territories, Asia,  
Turkey, Goethe Institut, Deutsche Welle

Phone +49 89 2441295-585  
[stephanie.wang@globalscreen.de](mailto:stephanie.wang@globalscreen.de)



Global Screen

Sonnenstr. 21 | 80331 Munich | Germany  
Ph +49 89 2441295 500 | F +49 89 55876 19 106  
[info@globalscreen.de](mailto:info@globalscreen.de) | [www.globalscreen.de](http://www.globalscreen.de)